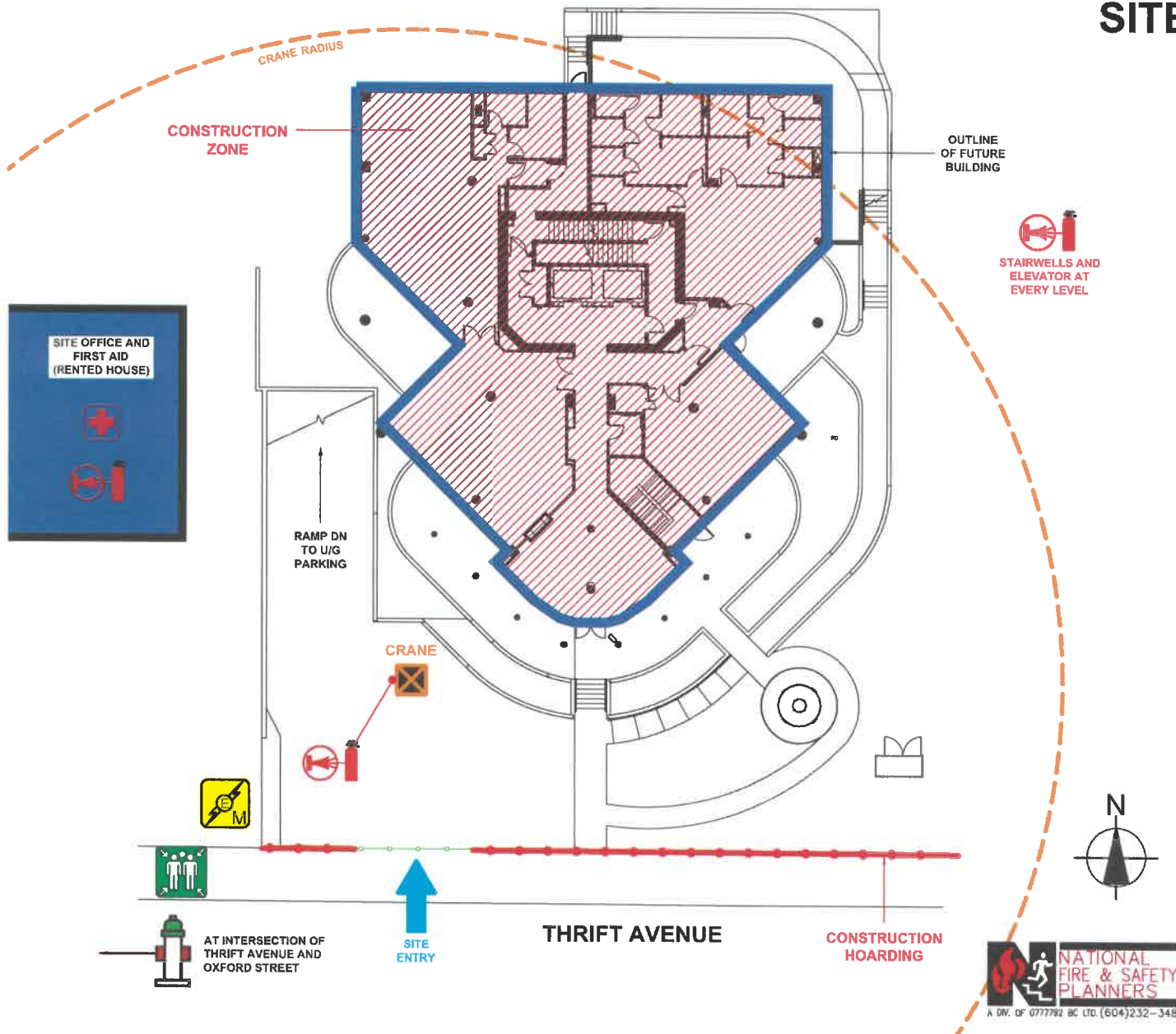









SITE MANAGEMENT PLAN

FANTOM TOWER
14825 THRIFT AVENUE
WHITE ROCK, B.C.



LEGEND

-  FIRE DEPT. ENTRY
-  FIRE HYDRANT - PUBLIC
-  FIRE EXTINGUISHER
-  AIR HORN
-  FIRST AID STATION/ROOM
-  ASSEMBLY AREA
-  MAIN ELECTRICAL SHUT-OFF

FIRE / EVACUATION SIGNALS - 1 LONG BLAST
FIRST AID SIGNAL - 3 SHORT BLASTS
EMERGENCY PHONE 911

EMERGENCY NUMBERS

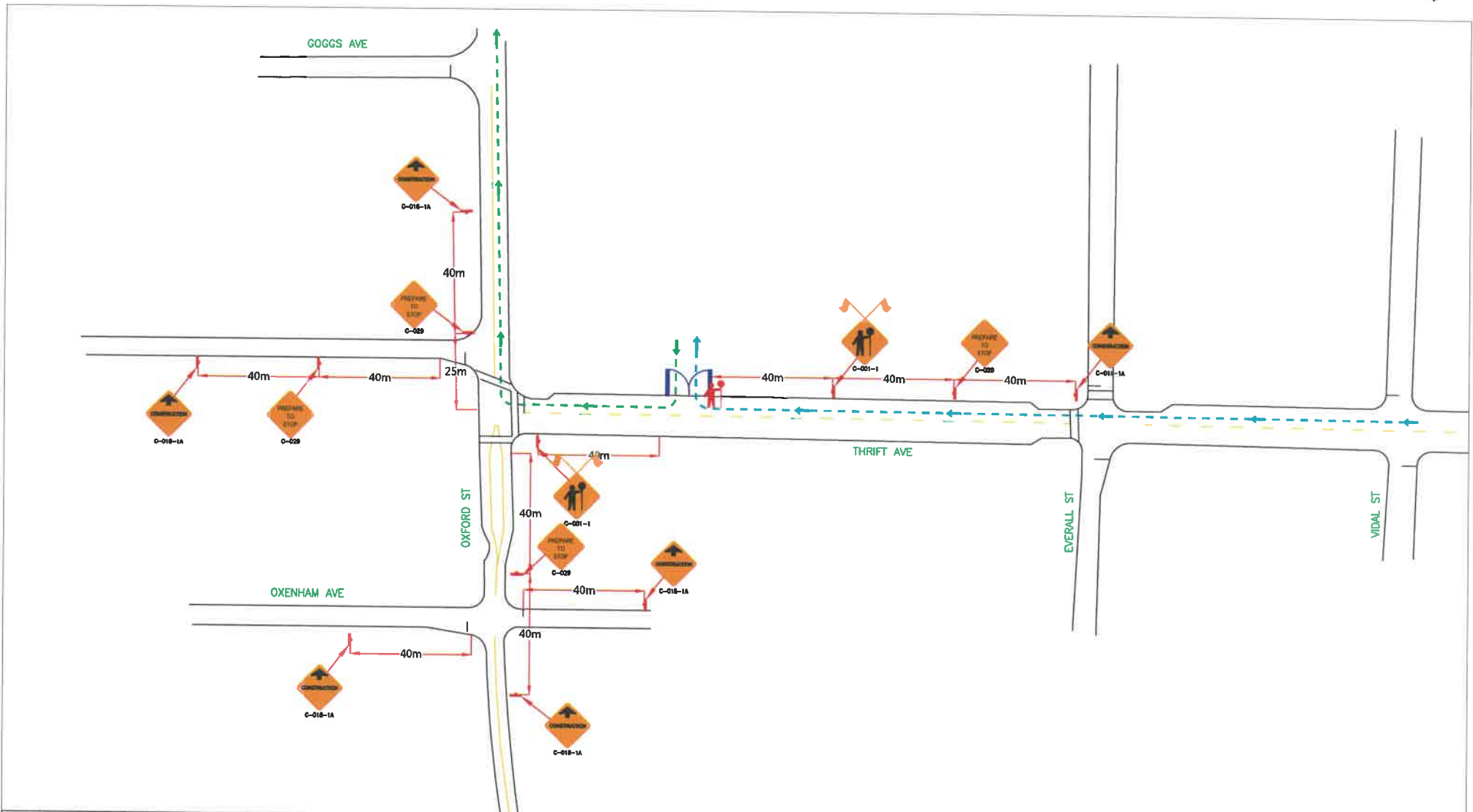
FIRE DEPARTMENT	911
FIRE DEPARTMENT (NON EMERGENCY)	604-541-2121
WHITE ROCK RCMP	911
WHITE ROCK RCMP (NON EMERGENCY)	778-593-3600
AMBULANCE	911
PEACE ARCH HOSPITAL	604-531-5512
PROVINCIAL POISON CONTROL CENTRE	1-800-567-8911
ENVIRONMENT EMERGENCIES	1-800-663-3456
BC HYDRO	1-888-769-3766
FORTIS BC (EMERGENCY NUMBER)	1-800-663-9911
BC ONE CALL (CALL BEFORE YOU DIG)	1-800-474-6886
WORKSAFE BC	1-888-621-7233
SITE CONTACT (DEVAN MCCROY)	604-690-6384



Traffic Management

We will be utilizing drawing DWG03 prepared by Valley traffic systems for access and egress during the excavation phase of the work expected to last in duration from July 1 – September 30 2018. We will also be using this same plan periodically for deliveries throughout the duration of the project from July 1 2018 – May 2020. The traffic plan employs a flag person at the sidewalk for communications with pedestrians when access is required across the sidewalk.

We will be utilizing drawing DWG01 prepared by Valley traffic systems for concrete pours only when the need for two concrete trucks arises which we will keep to a minimum. All other concrete pours will use the curb lane at the project frontage and will not impact traffic. Certified flag persons will be employed for safety during any concrete pours.



LEGEND:

	Sign Location		Delimitator
	Class One Barricade		Traffic Control Person
	Closure Area		
	Access Route		
	Egress Route		



REVISIONS:

DATE	DETAILS

NOTES:

1. Dates: TBD
2. Hours of Operation: TBD
3. Duration: TBD
4. Traffic Plan based on a 50 km/h speed zone
5. TCPs to assist pedestrians and cyclists as required
6. Traffic specifications based on the MOT manual for work on Roadways (1999)

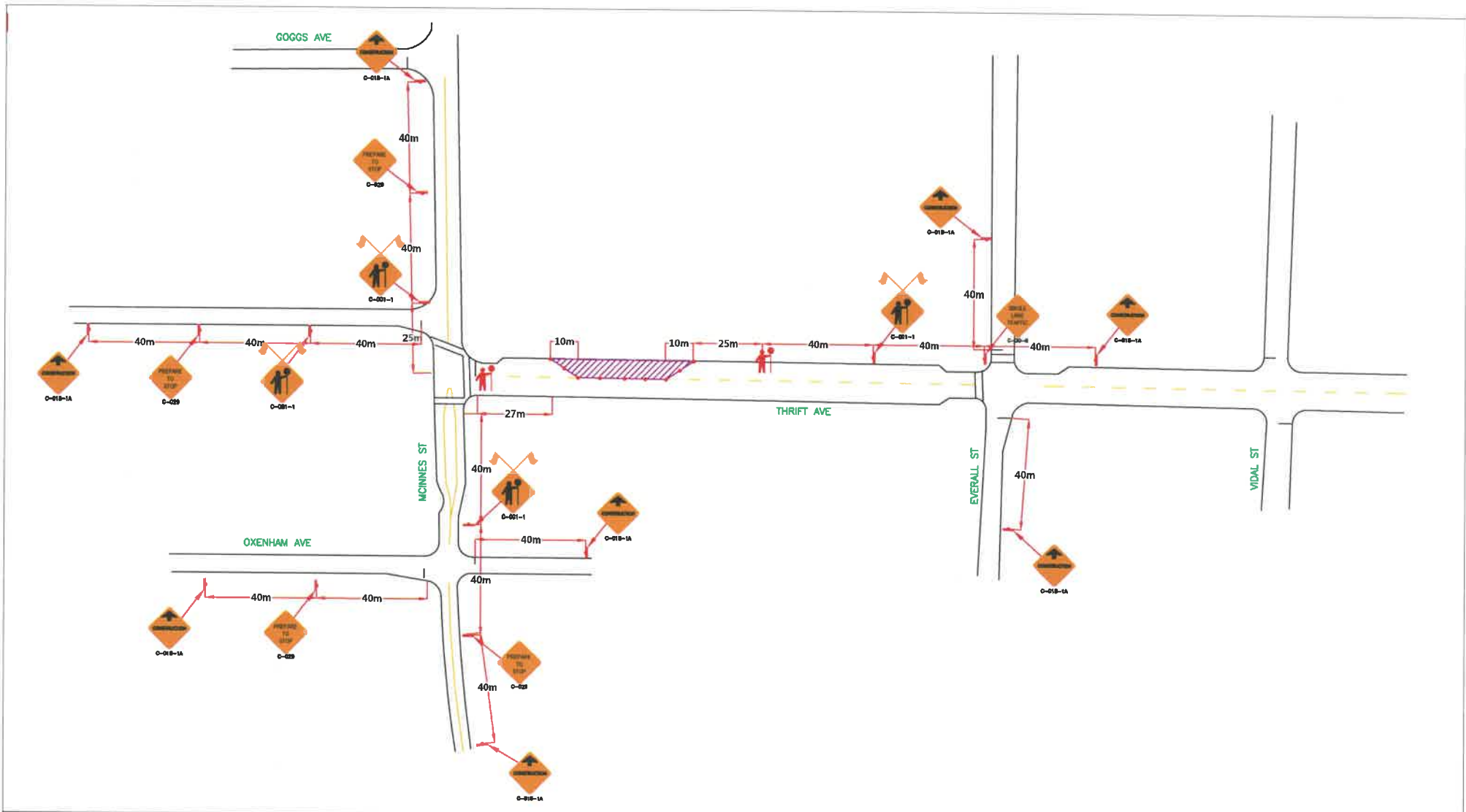
MUNICIPAL PROJECT NO.	
MUNICIPAL CONTACT:	TBD
SIGITE CONTACT:	Sean Courtney
PHONE:	604-913-2841
DATE SIGNATURES TO BE REMOVED:	N/A
REMOVE METERS TO BE REMOVED:	N/A

PEAK CONSTRUCTION

CITY OF WHITE ROCK: 14825 THRIFT AVE

Traffic Control Plan: Access and Egress

	ENGINEER SEAL												
	<table border="1" style="width: 100%;"> <tr> <td>SCALE:</td> <td>DATE:</td> <td>VIS PROJ. NO.:</td> <td>DWG. NO.:</td> <td>REV. NO.:</td> <td>REV. BY:</td> </tr> <tr> <td>NTS</td> <td>31.05.2018</td> <td>16806</td> <td>DWG03</td> <td>00</td> <td>SAS</td> </tr> </table>	SCALE:	DATE:	VIS PROJ. NO.:	DWG. NO.:	REV. NO.:	REV. BY:	NTS	31.05.2018	16806	DWG03	00	SAS
SCALE:	DATE:	VIS PROJ. NO.:	DWG. NO.:	REV. NO.:	REV. BY:								
NTS	31.05.2018	16806	DWG03	00	SAS								



LEGEND:

	Sign Location		Delineator
	Class One Barricade		Traffic Control Person
	Closure Area		
	Access Route		
	Egress Route		

VALLEY TRAFFIC SYSTEMS, INC.
 TRAFFIC MANAGEMENT DIVISION
 6776 10th Street
 Langley BC V1M 3D0
 PHONE: 604-513-0228
 FAX: 604-513-0881

REVISIONS:

DATE	DETAILS

NOTES:

1. Dates: TBD
2. Hours of Operation: TBD
3. Duration: TBD
4. Traffic Plan based on a 50 km/h speed zone
5. TCPs to assist pedestrians and cyclists as required
6. Traffic specifications based on the MOT manual for work on Roadways (1999)

MUNICIPAL PROJECT NO.
 MUNICIPAL CONTACTS
 TBD
 SHIPITE CONTACTS:
 Sign Counting:
 SIGN STOP(S) TO BE REMOVED:
 N/A
 PENDING LETTERS TO BE REMOVED:
 N/A

PEAK CONSTRUCTION					
CITY OF WHITE ROCK: 14825 THRIFT AVE					
Traffic Control Plan: Single Lane Alternating Closure					
	ENGINEER SEAL				
	SCALE:	DATE:	VTS PROJ. NO.:	ENC. NO.:	REV. NO.:
NTS	09.05.2018	16606	DWGD01	00	SAS



Parking

We are aware that the city would like all tradespersons to NOT use on street parking. We will be providing parking passes obtained from centennial arena for the use of tradespersons for parking. The arena is located approximately four blocks from the site and if required we will provide separate transportation from the parking lot to the site. The sidewalk directly in front of the development work area will be utilized primarily for loading/offloading and site access. Once the underground parkade is completed tradespersons will be allowed to park on site in the underground parkade.