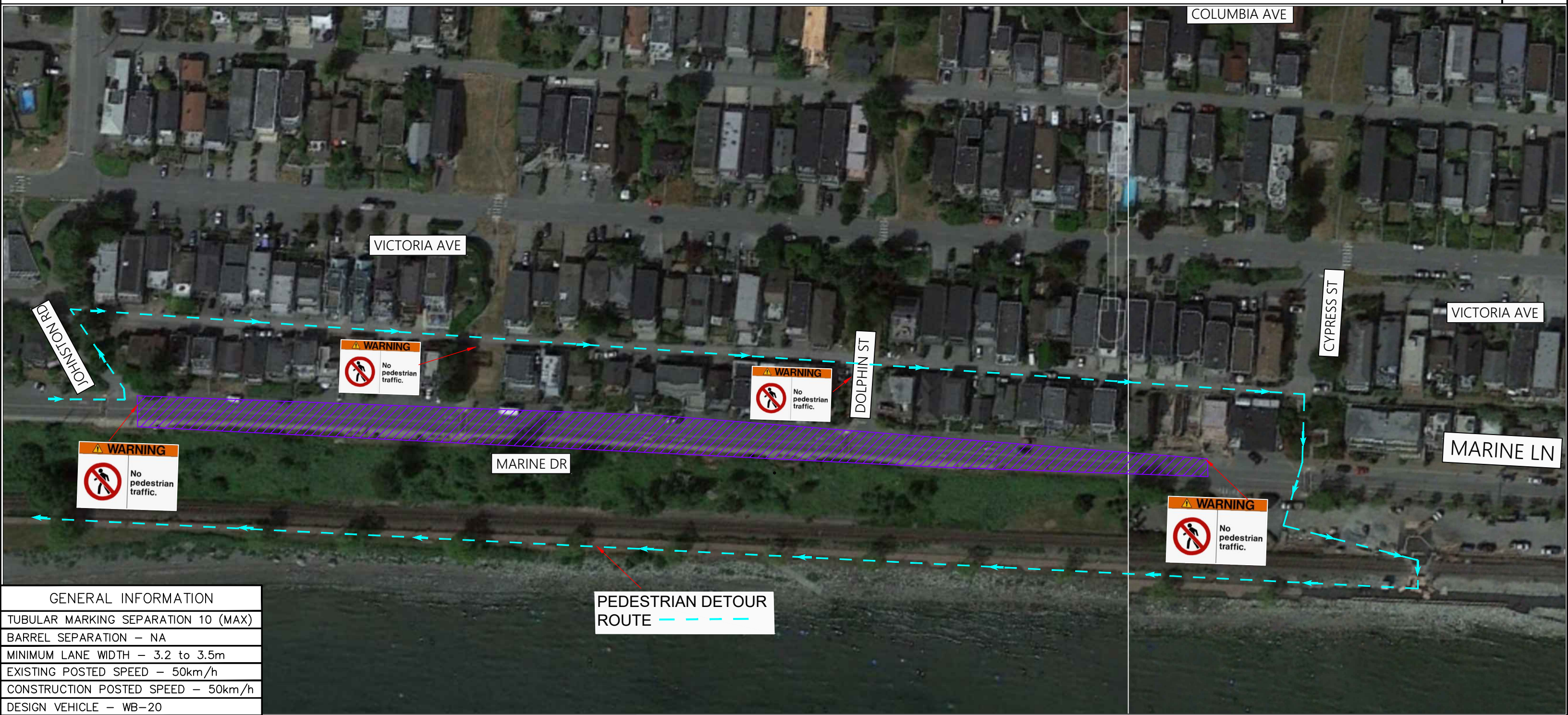


TRAFFIC CONTROL SYMBOL LEGEND

- CLASS 1 BARRICADES CLOSURE AREA
- TRAFFIC CONTROL PERSONNEL
- TYPE-D TUBULAR MARKER TRAFFIC SIGNAGE
- BUS STOP PEDESTRIAN DETOUR ROUTE



GENERAL INFORMATION
TUBULAR MARKING SEPARATION 10 (MAX)
BARREL SEPARATION – NA
MINIMUM LANE WIDTH – 3.2 to 3.5m
EXISTING POSTED SPEED – 50km/h
CONSTRUCTION POSTED SPEED – 50km/h
DESIGN VEHICLE – WB-20

GENERAL NOTES	
<ol style="list-style-type: none"> 1. Closure to be implemented on a 24hr basis 2. Traffic Specifications based on the MOTI Traffic Management Manual for Work on Roadways 2020 3. Active Hours of work: 7:00am to 5:30pm 4. Site Contact: Brent Loates 604-807-6665 5. Completion of Road Side Stabilization 6. Duration of work: 2 month 7. CMBC to be contacted a minimum 5 days prior to implementation 	

REV	DESCRIPTION	DATE	INITIAL	CITY OF WHITE ROCK	DWG No.	07 – Pedestrian Detour Route
0	ISSUED FOR INFORMATION	08.17.20	AME	PROJECT: HUMP RETAINING WALL STABILIZATION	SCALE:	N.T.S
1	ADDED PEDESTRIAN SIGN	08.18.20	AME			
				CLIENT:		
					UNIT 8 – 20195 68 AVENUE	
					KOPER & COMPANY TRAFFIC SERVICES	