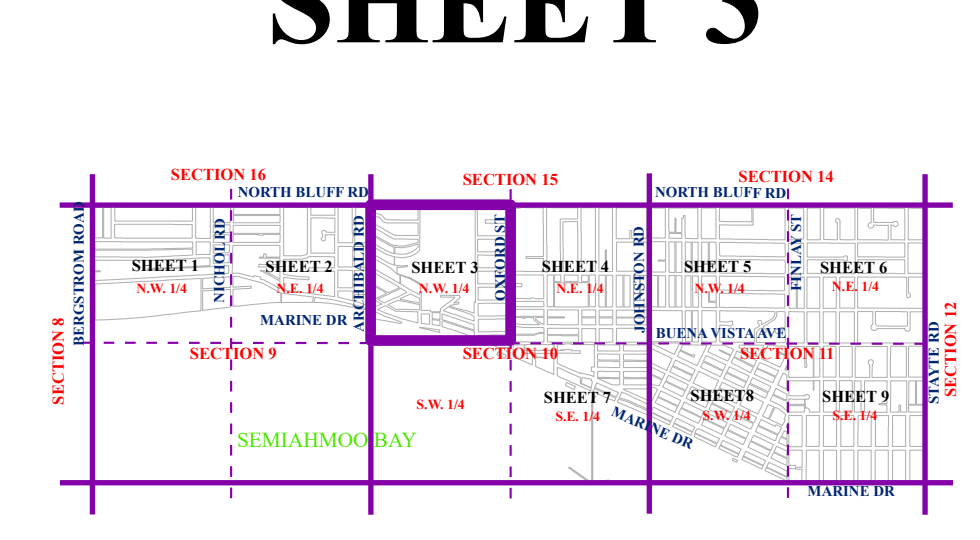
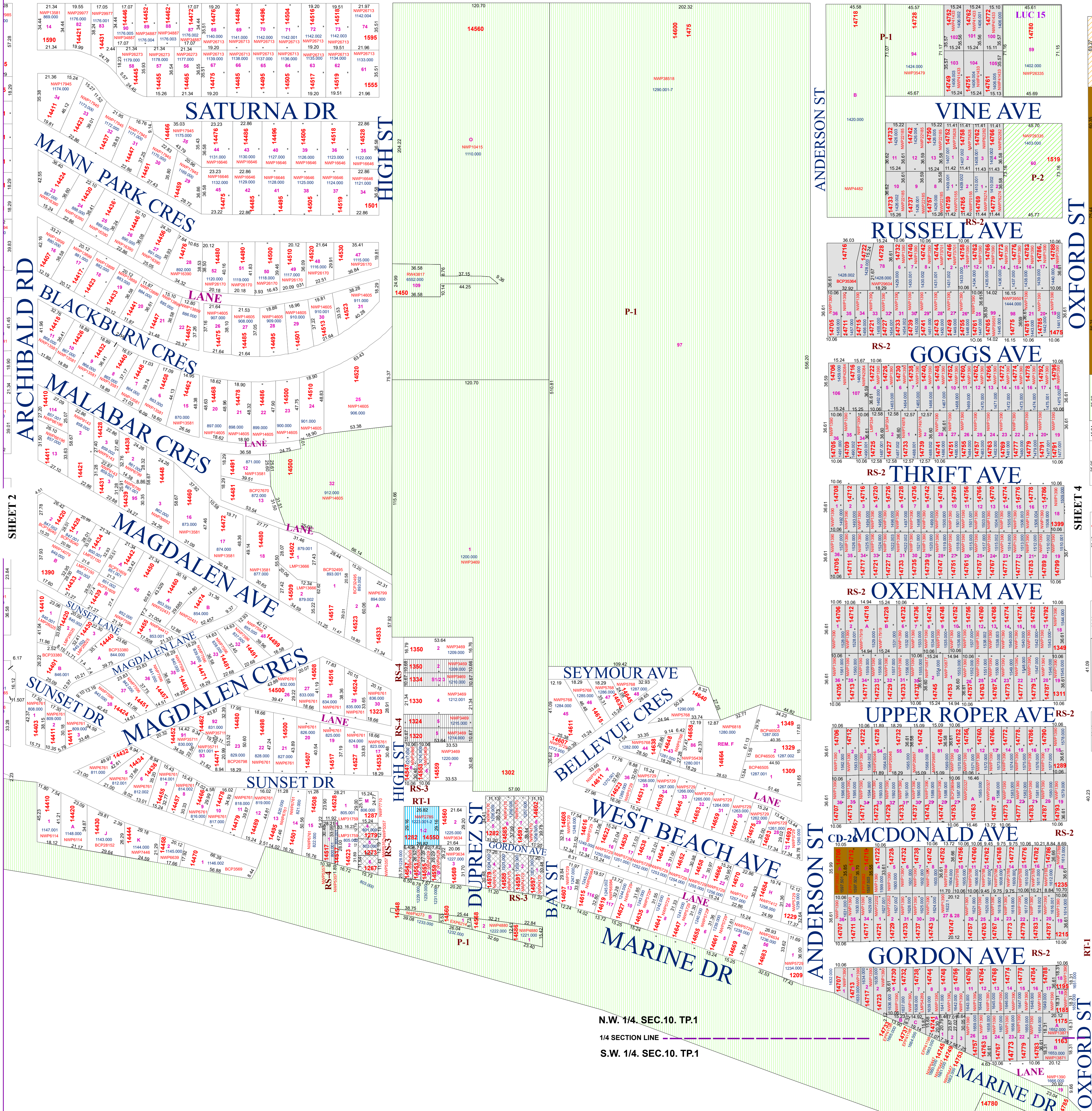


# NORTH BLUFF RD

# SHEET 3



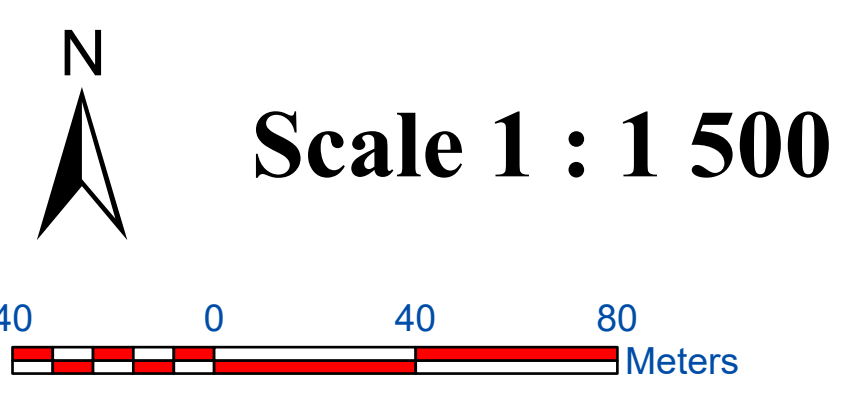
## Zone Map

adopted by City Council April, 15, 2013  
Schedule C - Bylaw No. 2000

The Corporation of  
the City of White Rock

NORTH WEST QUARTER SECTION 10, TOWNSHIP 11

- ### Zones:
- RS-1 One Unit Residential Zone
  - RS-2 One Unit (Small Lot) Residential Zone
  - RS-3 One Unit (Small Lot, Hillside) Residential Zone
  - RS-4 One Unit (12 m Lot Width) Residential Zone
  - RE-1 Estate Residential 1 Zone
  - RE-2 Estate Residential 2 Zone
  - RE-3 Estate Residential 3 Zone
  - RI-1 One Unit (Infill 1) Residential Zone
  - RI-2 One Unit (Infill 2) Residential Zone
  - RT-1 Two Unit (Duplex) Residential Zone
  - RT-2 Three Unit (Triplex) Residential Zone
  - RM-1 Low Density Multi-Unit Residential Zone
  - RM-2 Medium Density Multi-Unit Residential Zone
  - RM-3 High Density Multi-Unit Residential Zone
  - RM-4 Marine Drive Medium Density Multi-Unit Residential Zone
  - CR-1 Town Centre Area Commercial / Residential Zone
  - CR-2 Lower Town Centre Area Commercial / Residential Zone
  - CR-3 West Beach Business Area Commercial / Residential Zone
  - CR-4 East Beach Business Area Commercial / Residential Zone
  - CR-5 Neighbourhood Commercial Zone
  - CR-6 Gas Bar/Convenience Commercial Zone
  - P-1 Civic / Institutional Use Zone
  - P-2 Church / Assembly Use Zone
  - P-3 Community Care Facility (Low Density) Zone
  - P-4 Community Care Facility (Medium Density) Zone
  - C-D Comprehensive Development Zone
  - Existing Land Use Contract (LUC)



Print Date: Jun 2 2022