

Info Sheet 5: New Major Developments

4 storeys & above; zoning approved

Isle of Mann Potential 2019 Construction (Dev. Permit Required)



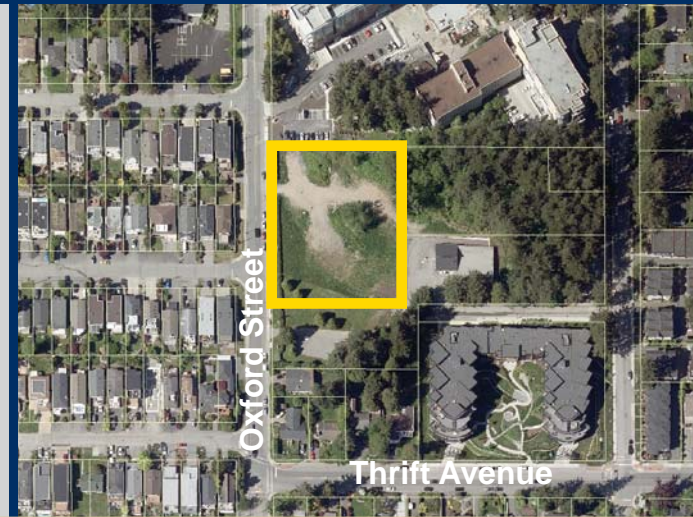
Location: 1454 Oxford Street

Building Height: 21 & 24 storeys

Dwellings: 121 apartments

Commercial: residential only

Builder: Isle of Mann Group



Morningstar House Construction Starting in 2019 (2021 completion)

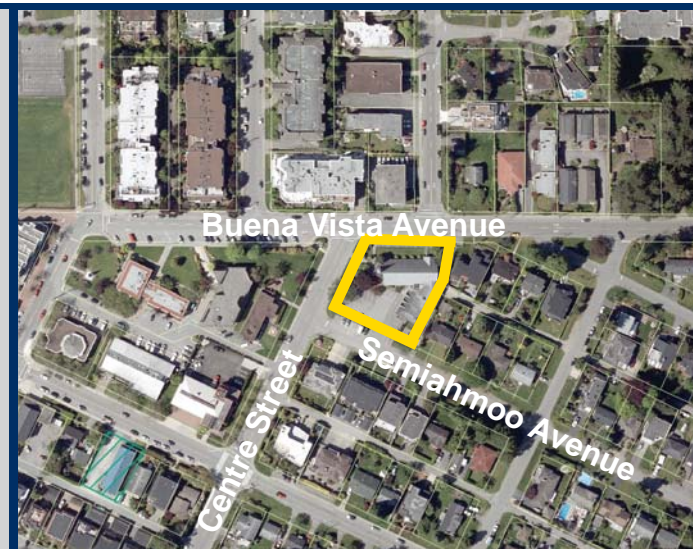


Location: 15385 Semiahmoo Avenue

Building Height: 4 storeys

Dwellings: 82 assisted living units; plus new United Church space

Builder: Origin Communities



Soleil Construction Starting in 2019 (2021 completion)



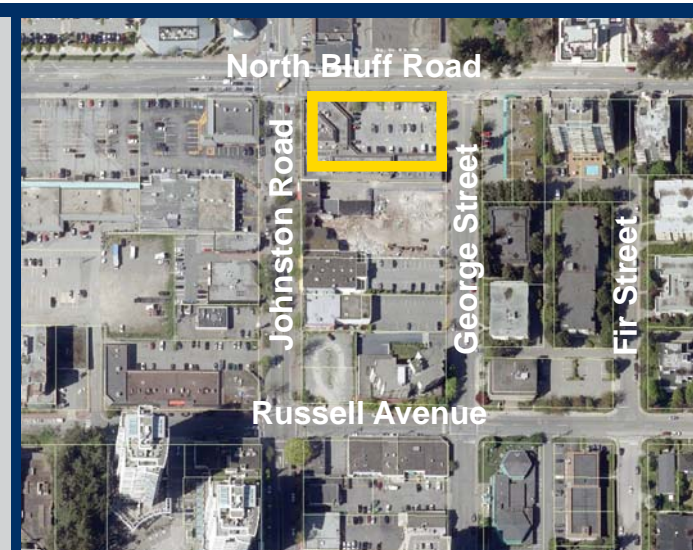
Location: 1588 Johnston Road

Building Height: 26 storeys

Dwellings: 178 apartments

Commercial: 24,600 sf; 4+ shops

Builder: RDG White Rock



For more information on development applications and construction, contact
City of White Rock Planning & Development Services Department

604.541.2149 / planning@whiterockcity.ca

